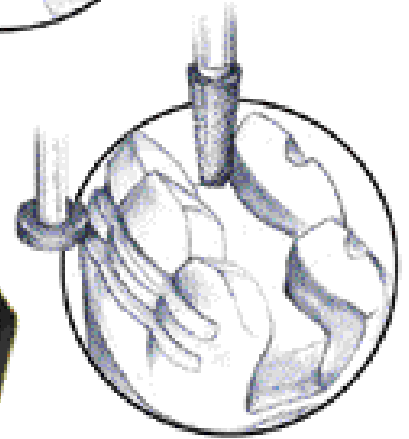
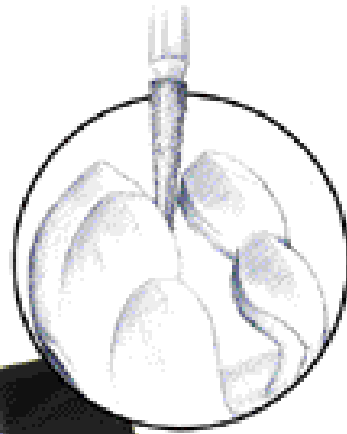
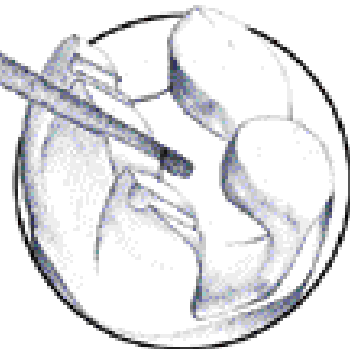
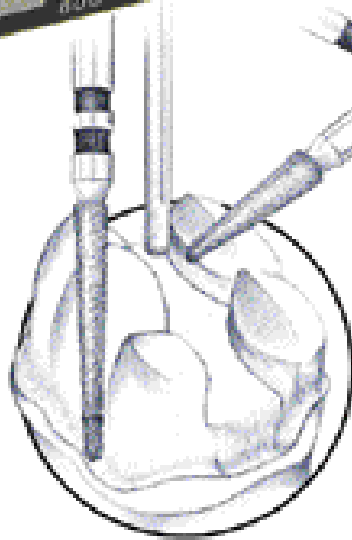


Esthetic Epitome Inlay/Onlay Veneer Preparation Kit

According to Ross Nash, DDS & Robert Lowe, DDS.



Technique Guide



Consistently. Rationally. Systematically.

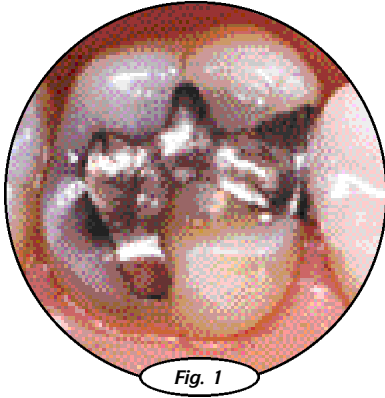
Buy Direct. Buy Brasseler USA.



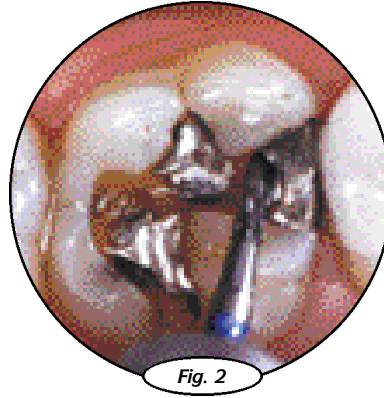
BRASSLER USA
DENTAL ROTARY INSTRUMENTS

Esthetic Epitome Inlay/Onlay Veneer Preparation Kit

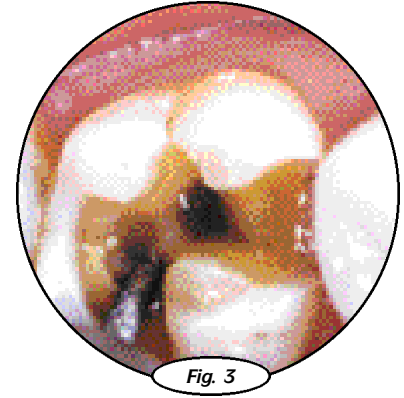
The Esthetic Inlay/Onlay Veneer Preparation kit, according to Ross P. Nash, DDS and Robert Lowe, DDS, is designed for optimal preparation of esthetic epitome inlay/onlay veneer preparations. The kit is very simple to use and when the suggested sequence is followed, leads to a very accurate preparation design in an efficient manner. The kit contains one carbide, one super coarse diamond, four medium diamonds, two fine and one two-grit diamond Brasseler USA burs.



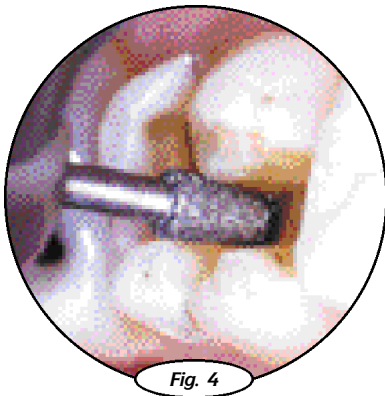
An occlusal view of tooth No. 14 before removal of a defective amalgam. There are recurrent caries on the mesial proximal surface and a fracture that extends from the previous restoration down the buccal groove.



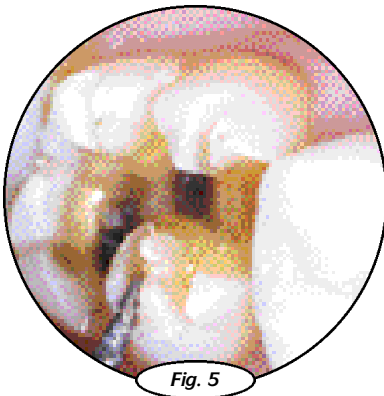
Removal of the old amalgam using the H32-012 amalgam removal bur.



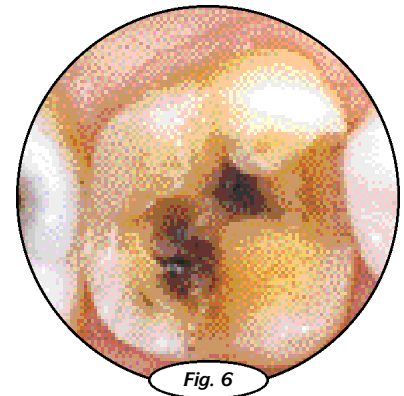
Gross preparation is accomplished using a 5855-016 super coarse shorter than short shank diamond bur.



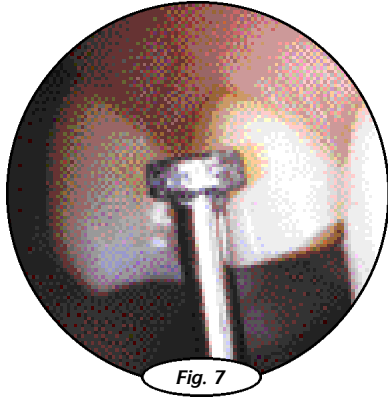
The 845KR-018 shorter than short shank bucket diamond is used to prepare the isthmus to the proper buccolingual width.



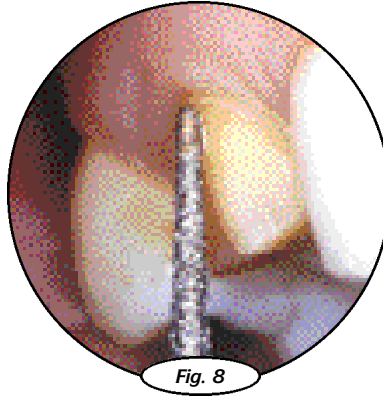
Depth cuts are made with the 5855-016 shorter than short diamond on the occlusal surface, extending from the central area of the preparation toward the periphery.



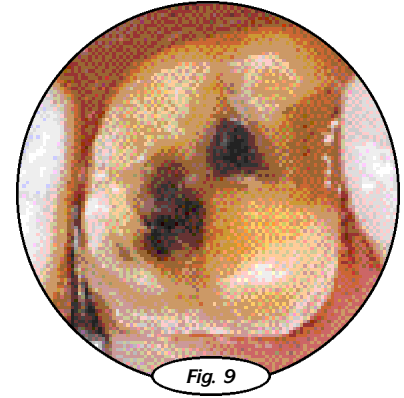
The depth cuts on the occlusal aspect are joined to ensure uniform reduction of the buccal cusps that follows the natural cuspal inclination toward the central sulcus.



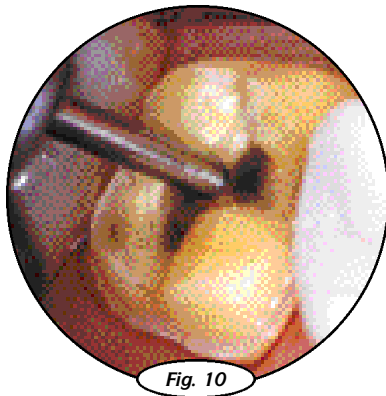
The 0.7mm depth cutter (828-030) is used to horizontally depth cut the facial veneer portion and the lingual portion of the preparation.



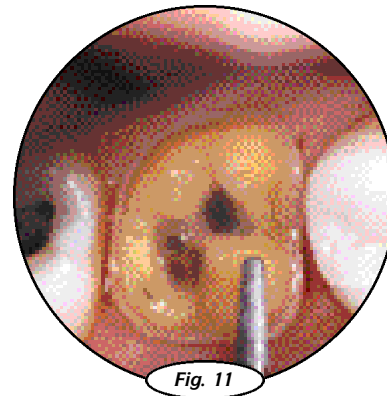
The 6844-014 two-grit diamond is used to prepare the facial surface. The surface is prepared in two distinct planes and has a slight chamfer for a gingival finish line.



The 8392-016 interproximal finishing shorter than short shank diamond is held in a horizontal fashion to vertically break contact with the mesial of tooth No. 15.



The 10839-016 tissue protected end cutting diamond is used to smooth the pulpal wall of the preparation. The tissue protected feature of this bur will ensure good, rounded internal angles extending occlusally from the base of the preparation.



The entire preparation is smoothed using a 8855-016 shorter than short shank rounded cylinder finishing diamond.

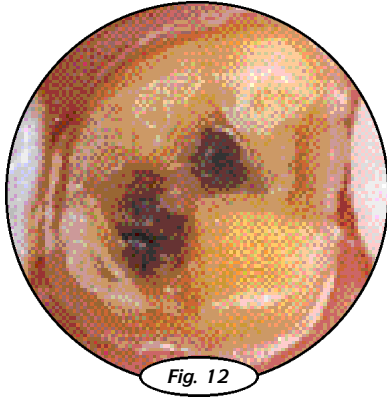


Fig. 12

The completed preparation of tooth No. 14 for a contact lens only veneer is shown from the occlusal view.

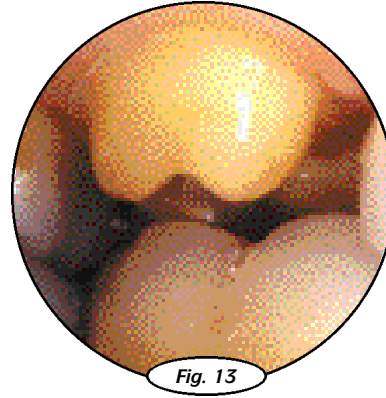


Fig. 13

The complete preparation is shown from the facial view during maximum intercuspation to show the proper occlusal clearance required for the thickness of the restorative material in the functional areas.

Esthetic Epitome Inlay/Onlay Veneer Preparation Kit

331.31.620



331.31.620



Order No.	H32	● 5855	● 845KR	● 845KR	828	6844	● 8855	10839	● 8392
Size Ø 1/10 mm	012	016	018	025	030	014	016	016	016
L mm	-	-	-	-	-	-	-	-	-

● = shorter than short shank

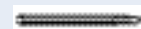
Esthetic Epitome Inlay/Onlay Veneer Preparation Kit

Developed by Ross Nash, DDS and Robert Lowe, DDS

Friction Grip 33 —
Ø1.60mm x 16mm L



Friction Grip 31 —
Ø1.60mm x 19mm L



BRASSLER USA
DENTAL DENTARY METAL LABORATORY

9-DAY Esthetic Epitome Continuums

CHARLOTTE NORTH CAROLINA

COURSE DATES AND REGISTRATION FEES



Tuition financing available through CARE CREDIT. PLEASE CALL FOR DETAILS.

Nash Institute for Dental Learning
2040 College Road,
Suite 100
Charlotte, NC 28211

Cancellation Policy

A deposit of 50% of total registration fee is due at time of registration. Balance due 45 days prior to start of course. If you should decide to cancel your deposit will be applied to a future course. No refunds will be given 30 days prior to start of the program and tuition cannot be prorated by session. The Nash Institute reserves the right to cancel any program up to 28 days before the scheduled start and will refund all payments in such cases.

THREE-DAY PROGRAM SELECTION

	REGISTRATION FEE	COURSE FEE
2003: May 30 - June 1 (Chicago); October 3-5 (Charlotte) Direct Anterior and Posterior Esthetic Dentistry <i>Instructors: Ross W. Nash, DDS and Robert A. Lowe, DDS</i>	Chicago \$2595. ⁰⁰ Charlotte \$1895. ⁰⁰	
2003: June 27-29 (Chicago); November 7-9 (Charlotte) Indirect Anterior Esthetic Dentistry <i>Instructors: Ross W. Nash, DDS and Robert A. Lowe, DDS</i> <i>preceded by... A THREE DAY DENTAL ASSISTANTS COURSE</i>	Chicago \$2595. ⁰⁰ Charlotte \$1895. ⁰⁰	End Credit \$47 (Char Co
2003: July 25-27 (Chicago); December 12-14 (Charlotte) Indirect Posterior Esthetic Dentistry <i>Instructor: Ross W. Nash, DDS and Robert A. Lowe, DDS</i>	Chicago \$2595. ⁰⁰ Charlotte \$1895. ⁰⁰	
2003: August 1-2 (Charlotte) A Cutting Edge Seminar Surgical Recontouring of Hard and Soft Tissues for Esthetic Dentistry <i>Instructor: Robert A. Lowe, DDS</i>	\$1895. ⁰⁰	
2003: July 25-27 (Chicago); November 7-9 (Charlotte) Dental Assistants Course <i>Instructor: Sherman Pace, DA II</i> <i>In conjunction with Indirect Posterior (Chicago)</i> <i>and</i> <i>In conjunction with Indirect Anterior (Charlotte)</i>	\$495. ⁰⁰ each assistant	

2003: August 7-10 (Williamsburg, VA) Team Extravaganza

\$795.⁰⁰ (dentists) \$495.⁰⁰ (staff) \$295.⁰⁰ (social)

Keynote Speakers:
Nixie Quishin
Larry Rosenthal, DDS
Gary Zalacky
Paul Belvedere, DDS
Jennifer de St. George
...and many other great speakers!



For registration or more information, please call:

888-442-0242

or email Mark Cody:
markcody@aol.com

visit us online at:
www.rossnashseminars.com



Approved for continuing education credit by the American Dental Association (ADA) and the International Board of Standards and Practices for Certified Financial Planners (IBCFP).

Brasseler USA

One Brasseler Blvd.
Savannah, Ga 31419

Toll Free: 800.841.4522

Phone: 912.925.8525
Fax: 888.610.1937



Buy Direct. Buy Brasseler USA.

©2001 Brasseler USA



B-1792-06.03-KPC

Esthetic Epitome Inlay/Onlay Veneer Preparation Kit

According to Ross Nash, DDS & Robert Lowe, DDS.



Technique Guide

Buy Direct. Buy Brasseler USA.