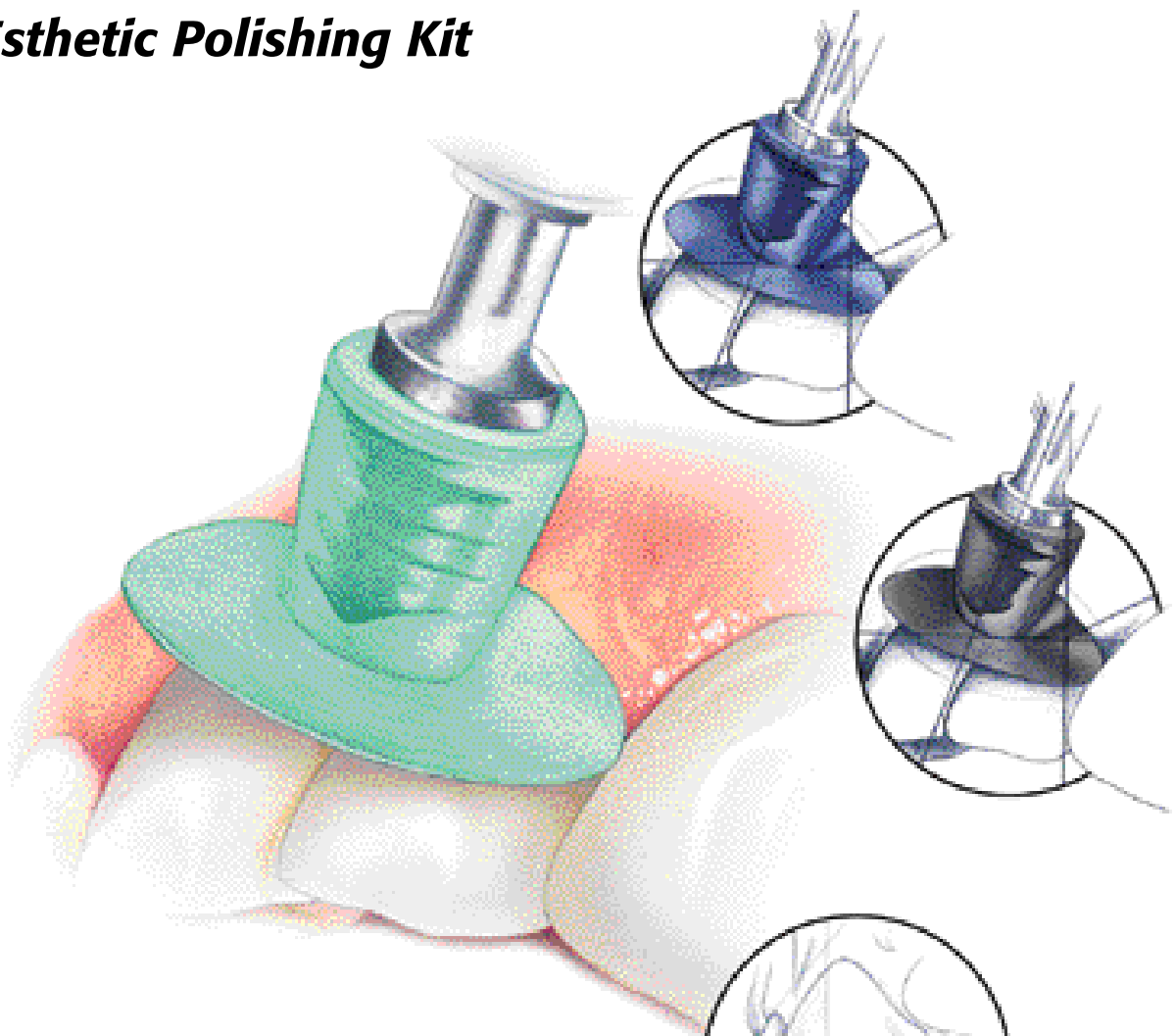
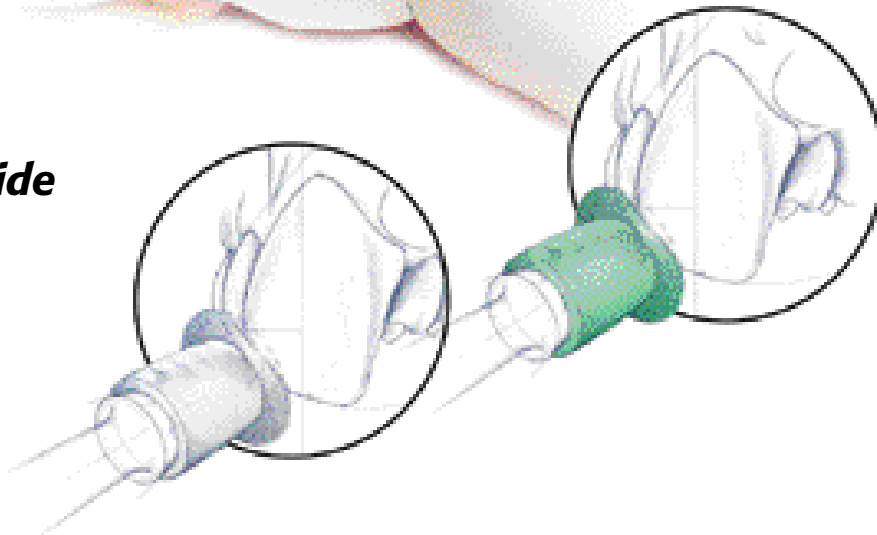


# **EP™ Esthetic Polishing Kit**



## **Technique Guide**



***Consistently. Rationally. Systematically.***

***Buy Direct. Buy Brasseler USA.***



**BRASSLER USA**  
DENTAL ROTARY INSTRUMENTS

# Composite Finishing & Polishing

The EP™ Esthetic Polishing Kit EP200 is ideal for finishing and polishing of composite restorations. The soft rubber mounting receptacle allows greater access by eliminating the need to severely angle these very thin and flexible discs. There is no metal hub exposed to scar the composite restoration or the adjacent tooth.

## Technique sequence



Fig. 1  
The Brasseler USA EP1LR blue coarse 12mm disc is used to shape the restoration. Placing the disc interproximally and working the flexible disc labially will develop a very nice interproximal and labial contour.

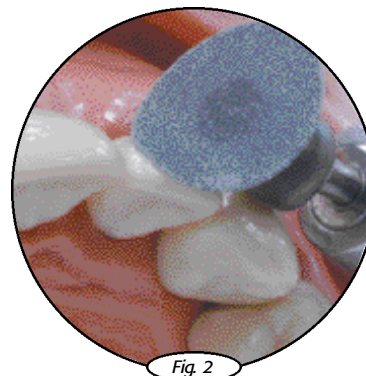


Fig. 2  
The Brasseler USA EP2LR black medium 12mm disc contours and removes deep scratches.



Fig. 3  
The Brasseler USA EP3LR green fine 12mm disc used from the restoration to tooth structure, develops a very smooth marginal finish while placing a satin finish on the composite restoration.

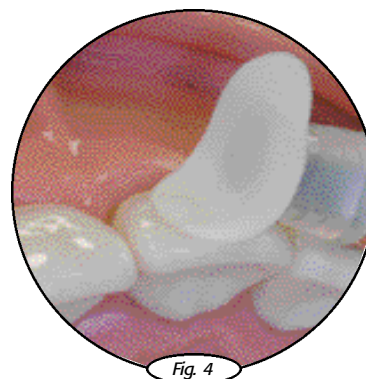


Fig. 4  
The final high shine is completed with a Brasseler USA EP4LR clear super fine 12mm disc working from the restoration to tooth structure.

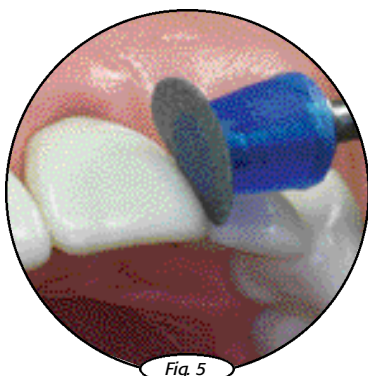


Fig. 5  
The Brasseler USA EP1SM small blue coarse 8mm disc is used to contour the restoration and develop incisal embrasures. The initial cut should be made from labial to lingual then from incisal to gingival to develop the embrasure contours.



Fig. 6  
The Brasseler USA EP2SM black medium 8mm disc is used to refine contours and remove deep scratches.

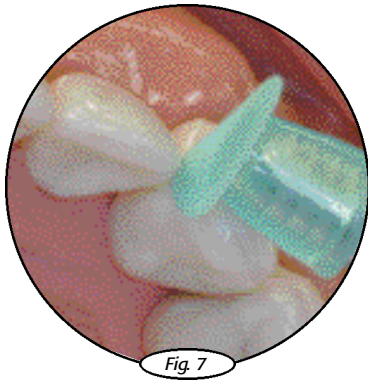


Fig. 7

The Brasseler USA EP3SM green fine 8mm disc places a satin finish on the composite restoration and further refines embrasure and incisal edge contours.

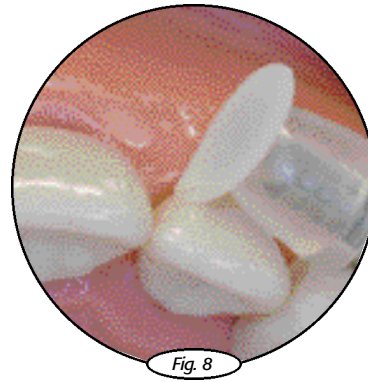


Fig. 8

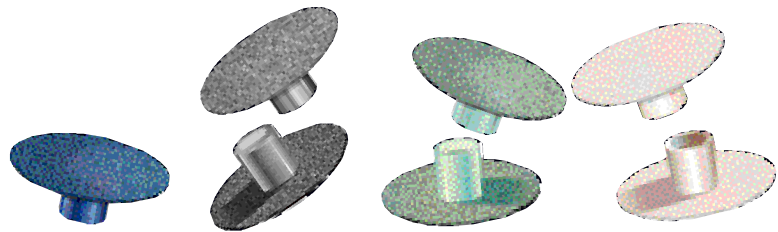
The Brasseler USA EP4SM clear super fine 8mm disc polishes the composite restoration to a high wet shine finish.

## Technique

The EP™ Esthetic Polishing Kit consists of thin, flexible discs available in 4 color coded grits and 2 sizes: blue-coarse; black-medium; green-fine; clear-super fine, 12mm and 8mm. The coarse disc is safe side down while the medium, fine and super fine are double sided. The right angle latch mounting mandrel allows for quick and easy changing of the discs. The coarse and medium grit discs are coated

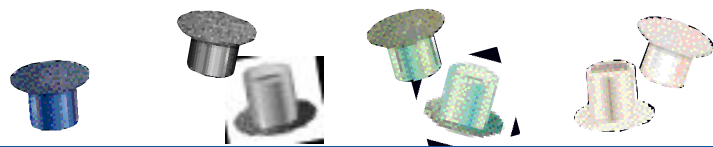
with silicone carbide to smooth the surfaces. The fine and extra fine discs are aluminum oxide coated to produce an ultra smooth, brilliant finish. Using the disc in proper order: blue-coarse; black-medium; green-fine; and clear-super fine (wet or dry with a feather stroke) is critical for optimal results in finishing and polishing of composite restorations.

## EP™ Esthetic Polishing Kit



### EP200

Order No.	EP1LR	EP2LR	EP3LR	EP4LR
Size Ø 1/10 mm	12.0	12.0	12.0	12.0
Grit	Blue - Coarse	Black - Medium	Green - Fine	Clear - Super fine
Grit Direction	Safe side down	Double sided	Double sided	Double sided



Order No.	EP1SM	EP2SM	EP3SM	EP4SM
Size Ø 1/10 mm	8.0	8.0	8.0	8.0
Grit	Blue - Coarse	Black - Medium	Green - Fine	Clear - Super fine
Grit Direction	Safe side down	Double sided	Double sided	Double sided

Kit contains: 20 polishers of each grit & 2 mandrels.

Re-order: All polishers are packaged 100 per pack. Mandrels are packaged 5 per pack.

### EP™ Esthetic Polishing Kit

Developed by Brasseler USA

RA Latch 21 – (EPM21)  
Ø2.35mm x 22mm L



Abrasive coated vinyl disc for final polishing of composite.



**Brasseler USA**

One Brasseler Blvd.  
Savannah, GA 31419

**Toll Free: 800.841.4522**

Phone: 912.925.8525

Fax: 888.610.1937



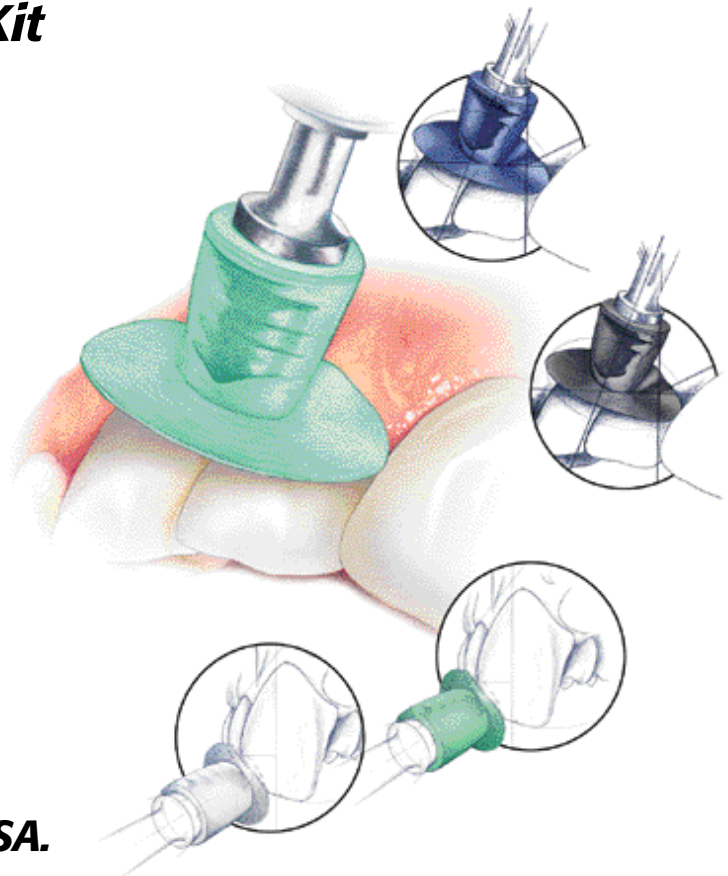
***Buy Direct. Buy Brasseler USA.***

©2002 Brasseler USA



B-1973-07.02-DDH

***EP™ Esthetic Polishing Kit***



***Technique Guide***

***Buy Direct. Buy Brasseler USA.***